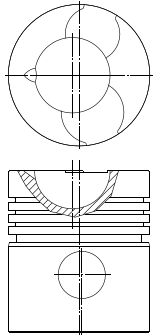


BMT3

1 | Ø 105

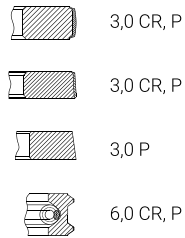
Д21, Д120	2 Cyl.	16:1	┘┘ 120	2078cc	15...22 kW (21...30 HP)	Benzin
Д37, Д144	4 Cyl.	16:1	┘┘ 120	4156cc	27...44 kW (37...60 HP)	Benzin

Д144-1004021Б

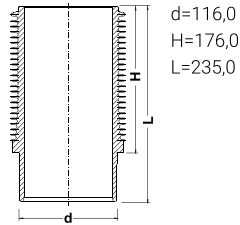


H=77,12
B=-28,65
BØ=56,0
e1=2,3
e2=1,3
L=120,0

144-1004002

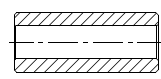


Д37М-1002021-А3



Воздушное охлаждение

Д37М-1004042



D=35,0
L=89,0

B35x1,2 DIN 472 x2



Д144-1000108



Д144-1000105



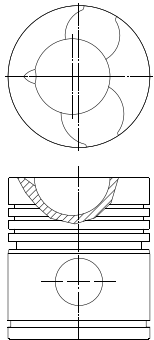
Д144-1000101



Д144-1000101-K5

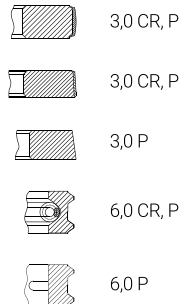


Д144-1004021Б-П



H=77,12
B=-28,65
BØ=56,0
e1=2,3
e2=1,3
L=120,0

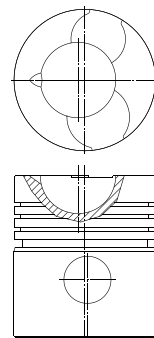
144-1004002-А5



2 | Ø 105

Д145Т	4 Cyl.	16:1	┘┘ 120	4156cc	57 kW (75 HP)	TurboDiesel
--------------	--------	------	--------	--------	---------------	-------------

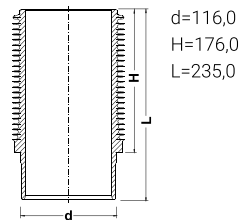
Д145-1004021А2*



H=77,12
B=-29,0
BØ=58,0
e1=2,3
e2=1,3
L=120,0

*канавки под кольца трапецеидального сечения

Д37М-1002021-А3



Воздушное охлаждение

Д145Т-1000101

