

1 | Ø 100

130, 508 (модиф.)

V8 Cyl.

6,5:1

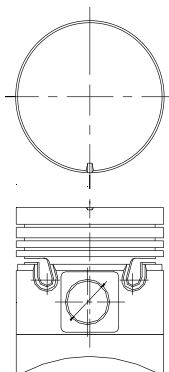
∠ 95

5969cc

110 kW (150 HP)

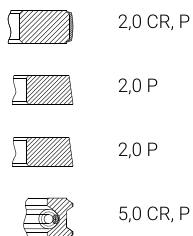
Benzin

130-1004015-A3

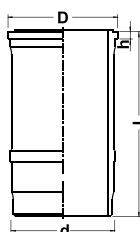


H=62,5
L=110,0

130.1000101

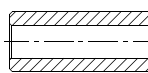


130-1002021-A2



WH
D=132,0
h=5,1
d=122,0
L=188,5

130-1004020



D=28,0
L=82,0

130-1000108



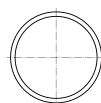
130.1000110



120-1004022 x2



111-1002024 x2



2 | Ø 108

375, 509 (модиф.)

V8 Cyl.

6,5:1

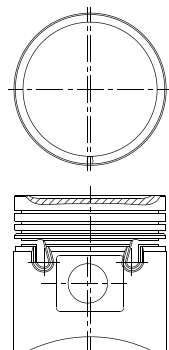
∠ 95

6962cc

129 kW (175 HP)

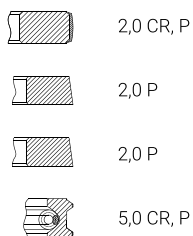
Benzin

375-1004015-A3

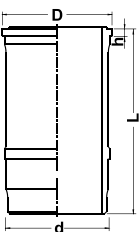


H=62,5
B=-2,3
BØ=88,5
L=113,0

375.1000101

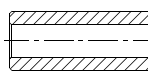


375-1002021-A2



WH
D=132,0
h=5,1
d=122,0
L=188,5

130-1004020



D=28,0
L=82,0

375.1000108



120-1004022 x2



111-1002024 x2

